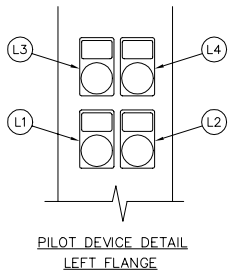


- PILOT DEVICE LEGEND**  
**LEFT FLANGE**
- L1. SWITCH IN EMERGENCY LIGHT
  - L2. PUSH TO TEST BUTTON
  - L3. SWITCH IN NORMAL LIGHT
  - L4. EMERGENCY ISO SW. OPEN LIGHT

- PILOT DEVICE LEGEND**  
**RIGHT FLANGE**
- R1. START PUSH BUTTON
  - R2. SOFT STOP PUSH BUTTON
  - R3. POWER ON LIGHT
  - R4. COAST STOP PUSH BUTTON
  - R5. PHASE REVERSAL LIGHT
  - R6. DRIVE FAULT LIGHT



VOLTAGE	HORSEPOWER
200V	200-250 HP.
208V	200-250 HP.
230V	250 HP.
380V, 415V	350 HP.
460V	500 HP.

NOTES:  
ALL DIMENSIONS IN INCHES AND MILLIMETERS ([ ])

DRAWN SR 2-10-98 CHECK KH. 2-21-98 APPD J.C. 2-21-98		<b>METRON, INC.</b> DENVER, CO.		
			ENCLOSURE DIMENSIONS MODEL M700 WITH TRANSFER SWITCH 135.5" CABINET, 18" DEEP ELECTRIC FIRE PUMP CONTROLLER	
			CD32960A	SCALE N.T.S. SHEET 1 OF 1